

# Villa Anna Cap d'Ail



VILLANOVA  
LUXURY ESTATE



# GENERAL INFORMATION

Address: 1 Chemin du Golfe (three entrances available)

Land: 1600 m<sup>2</sup>

Living Area: ~ 400 m<sup>2</sup>

Floors: 3

Rooms: 5-6

Swimming pool area: ~370 m<sup>2</sup> (15 x 7 swimming pool)

Terraces: 80 m<sup>2</sup>

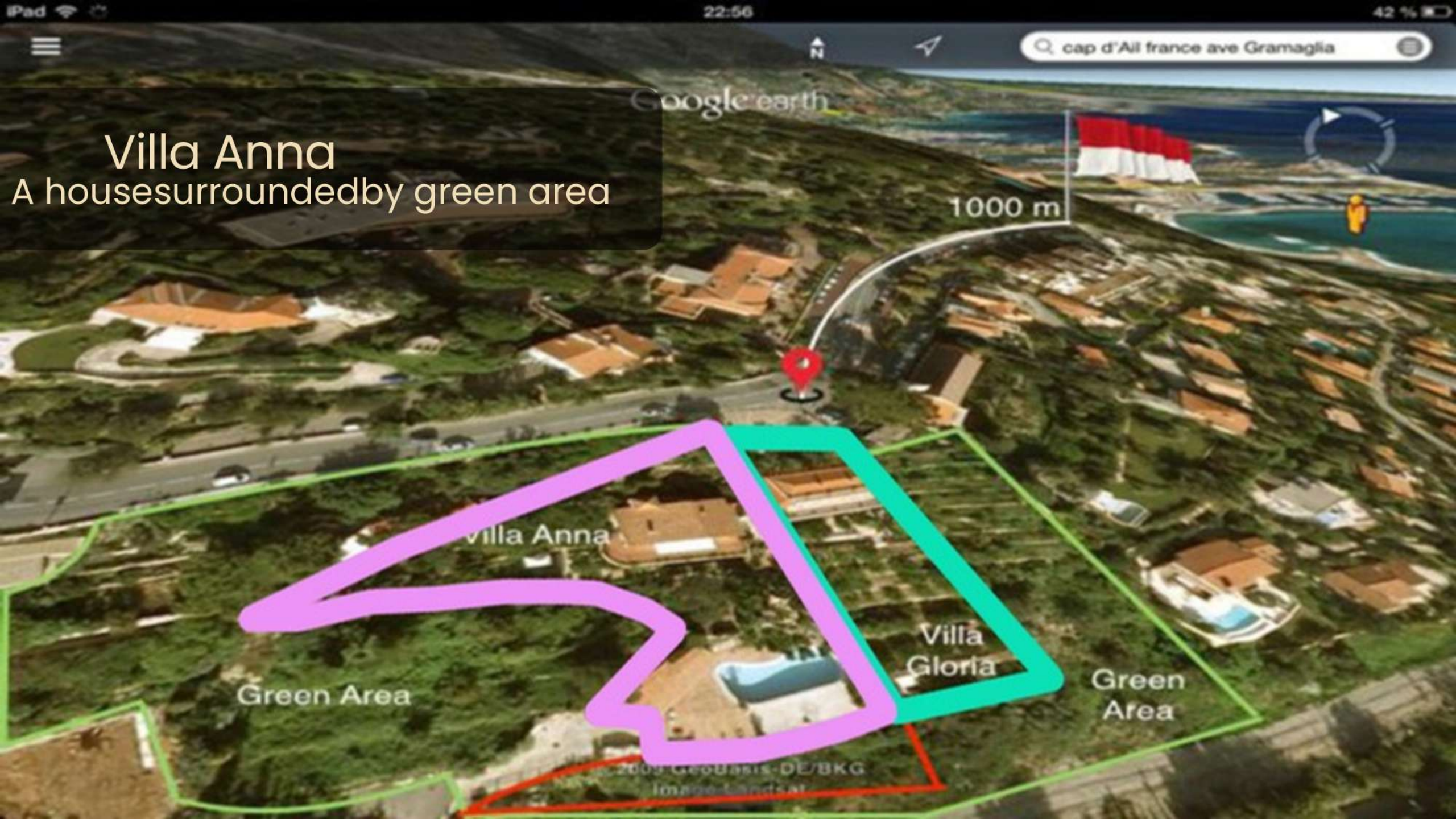
Garage with Seaview (~ 250 m<sup>2</sup>)

**CONTACTEZ-NOUS**

07 69 94 93 38

[contact@villanovaluxury.com](mailto:contact@villanovaluxury.com)

[villanovaluxury.com](http://villanovaluxury.com)



# Villa Anna

A housesurroundedby green area

villa Anna

Villa Gloria

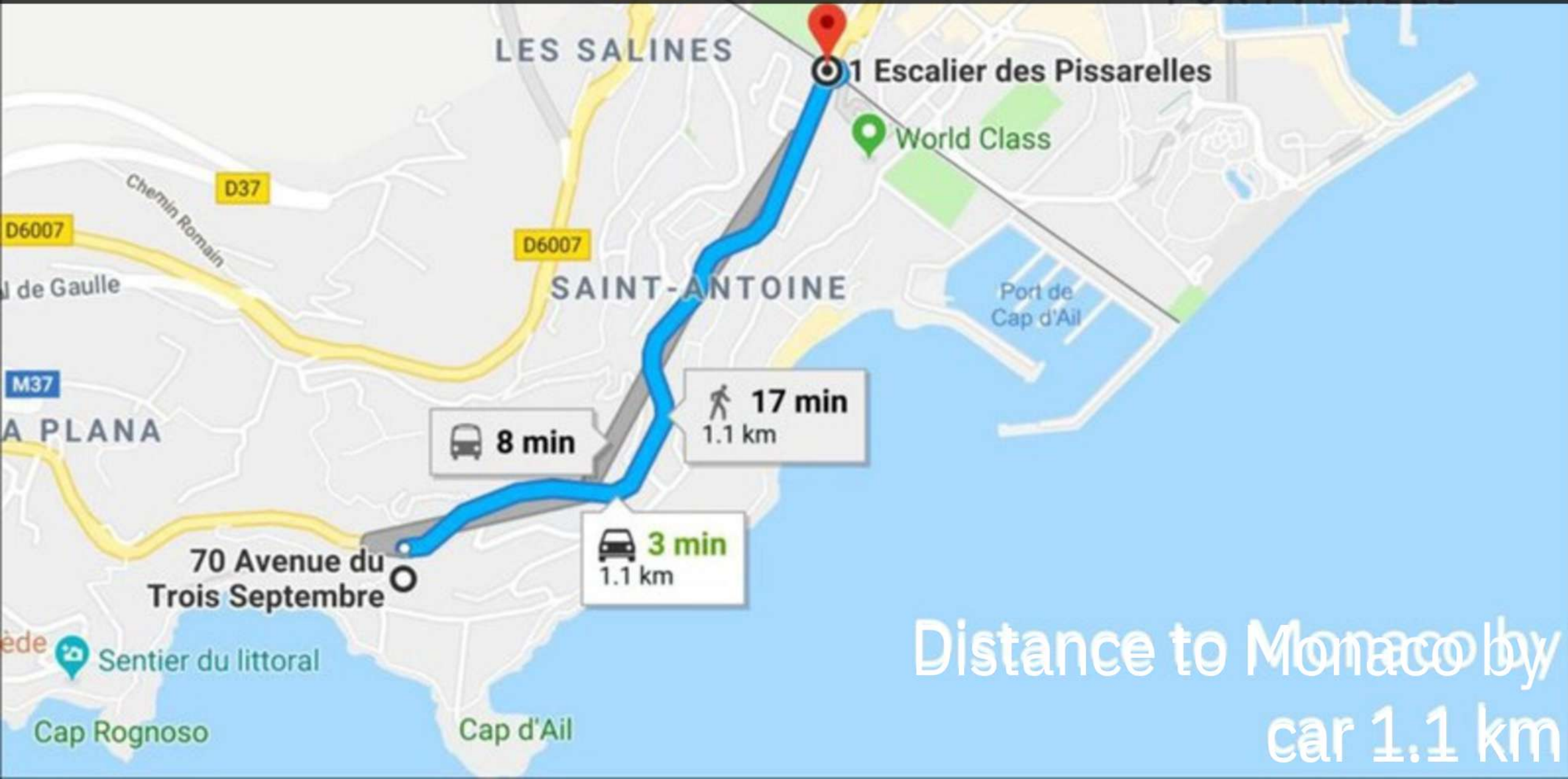
Green Area

Green Area

1000 m

© 2009 GeoBasis-DE/BKG  
Image Landsat

Distance to Monaco = 1.1 km



Distance to Monaco by  
car 1.1 km







# Exterior





**FIRST FLOOR**





Interior







**SECOND FLOOR**





# GROUND FLOOR



---

# POOL AREA

---





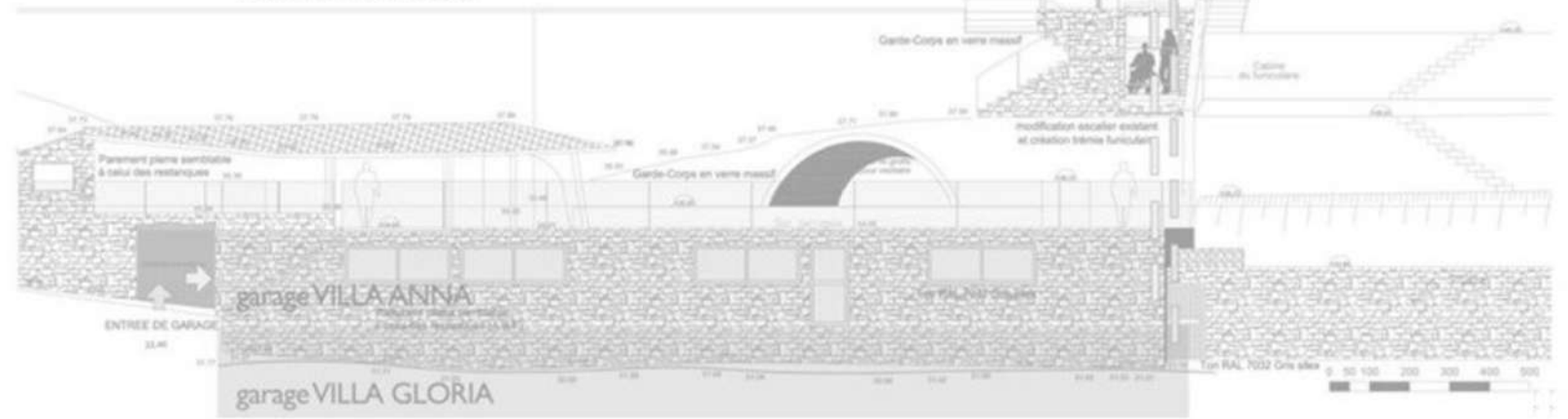
PCMIS.C FAÇADE SUD

VILLA ANNA

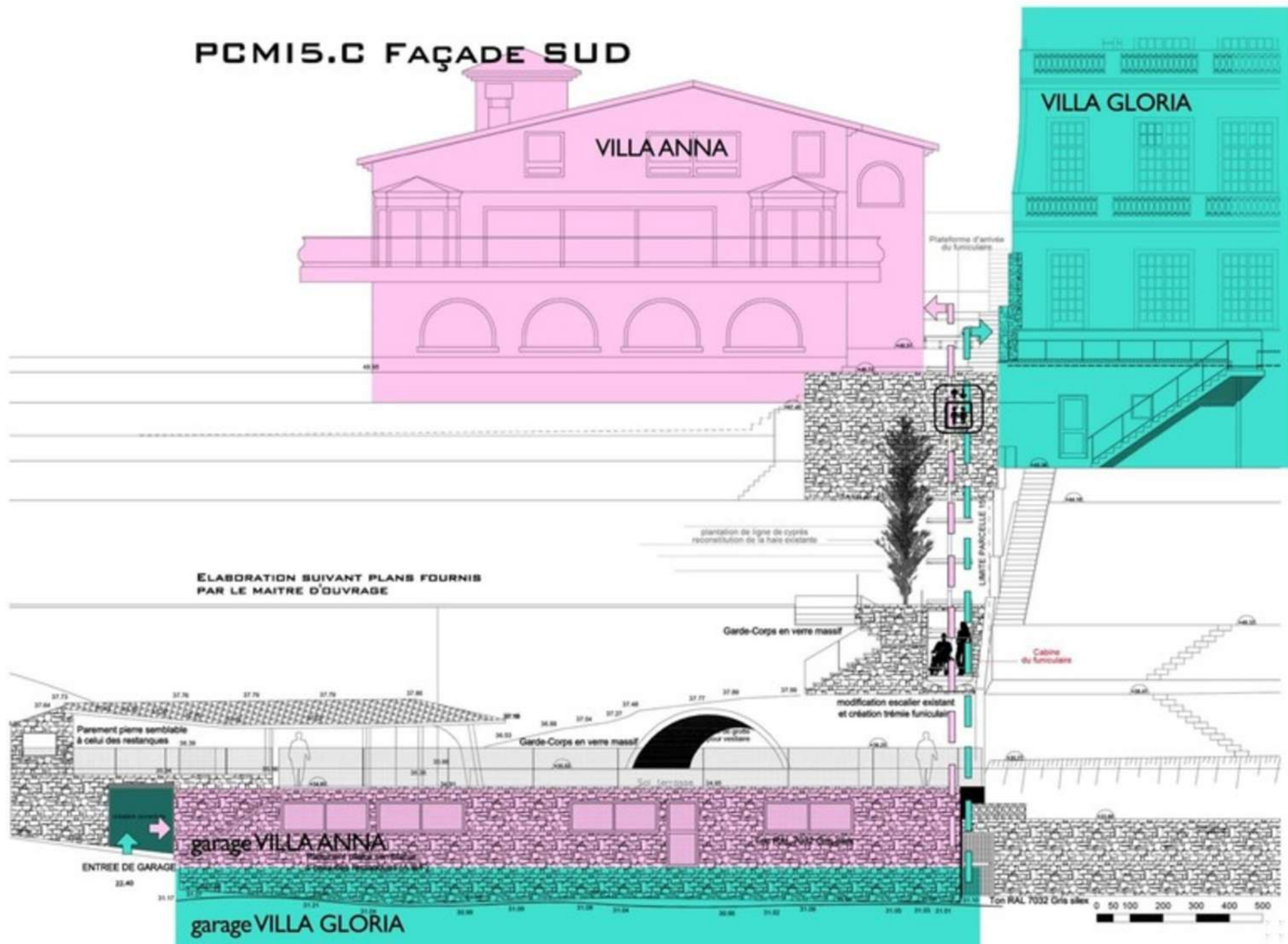
VILLA GLORIA

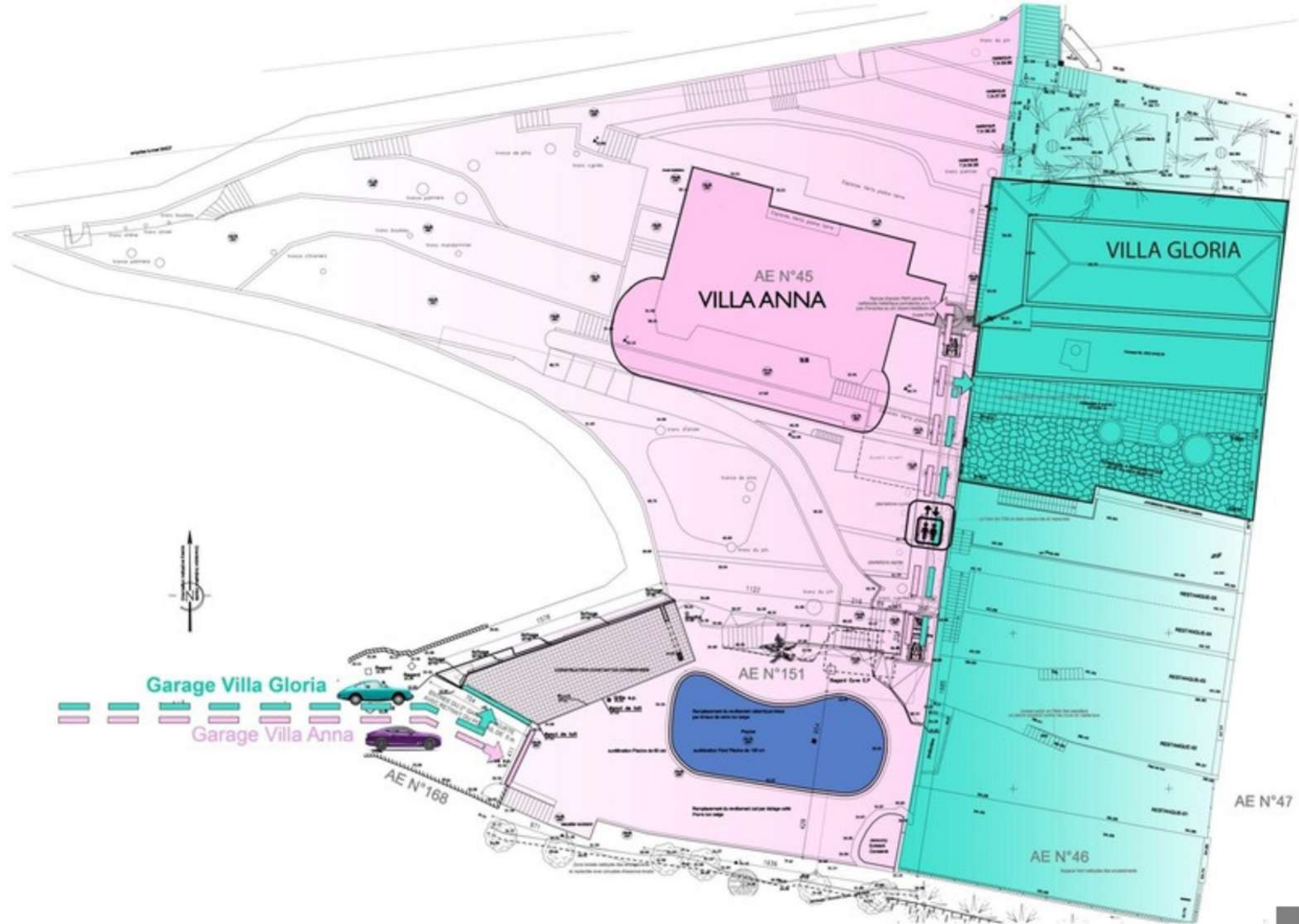
# PROJECT WITH CONSTRUCTION AUTHORISATION

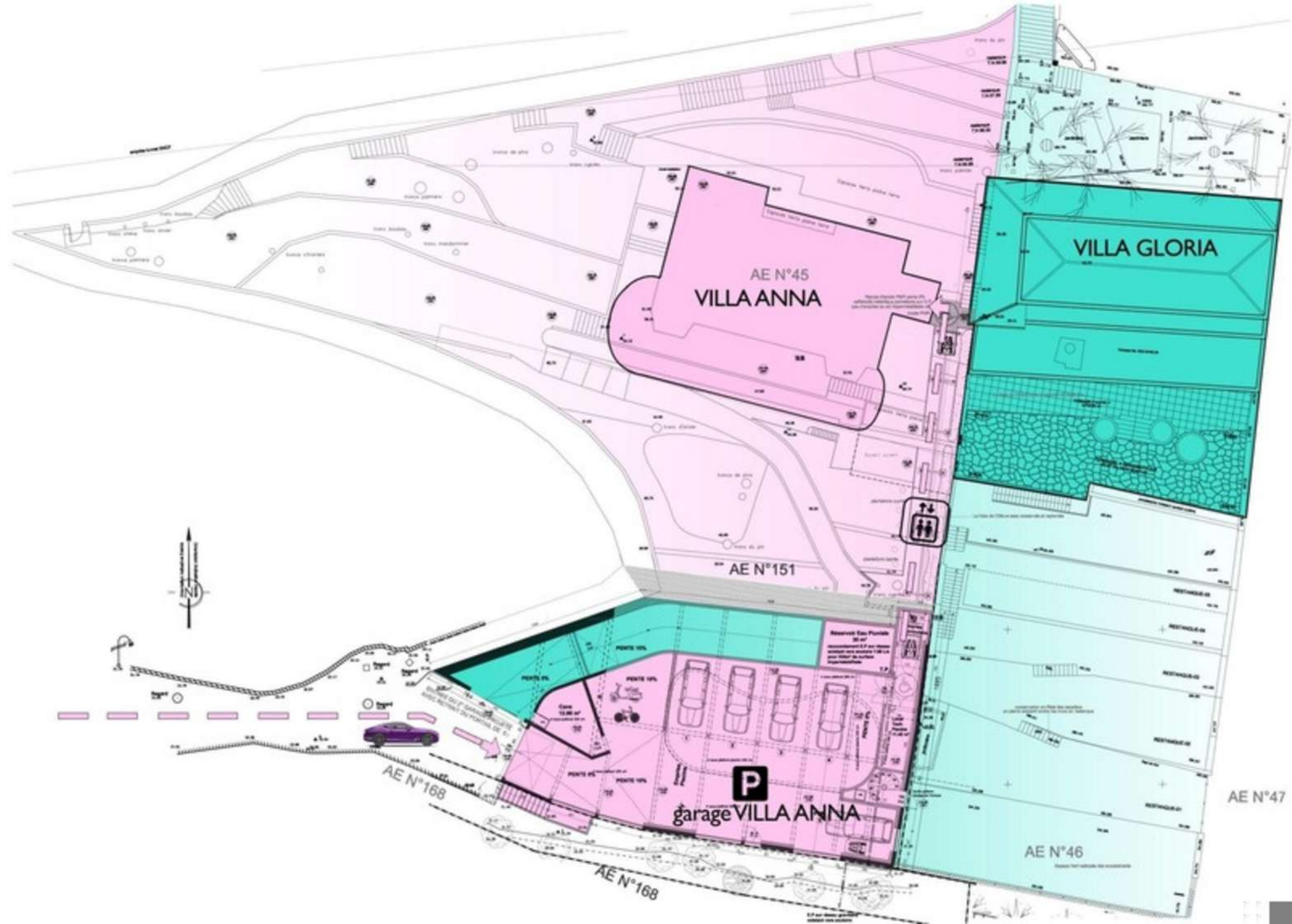
ELABORATION SUIVANT PLANS FOURNIS  
PAR LE MAITRE D'OUVRAGE



# PCM15.C FAÇADE SUD











VILLANOVA  
LUXURY ESTATE

**CONTACTEZ-NOUS**

07 69 94 93 38

[contact@villanovaluxury.com](mailto:contact@villanovaluxury.com)

[villanovaluxury.com](http://villanovaluxury.com)